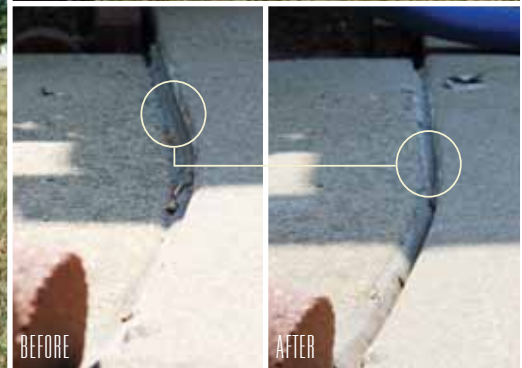


POLYURETHANE CONCRETE LEVELING



*Less invasive,
State-of-the art technology!*



Sunken concrete problems?

Helitech® utilizes a state-of-the-art technology to raise and level your existing concrete. Instead of breaking up, removing, and repouring the entire concrete slab, Helitech® inserts a special Polyurethane combination below the surface. Helitech is the ONLY contractor in the area to offer both traditional mudjacking and the lightweight polyurethane concrete raising method.



Process

After installing port holes in the existing concrete (1), Helitech® injects a Polyurethane material into ports using a special hydraulic system (2). The Polyurethane material expands to raise the surface of the slab to the desired height. The core holes are then filled with Portland cement (3) and repaired to produce a smooth, level surface.

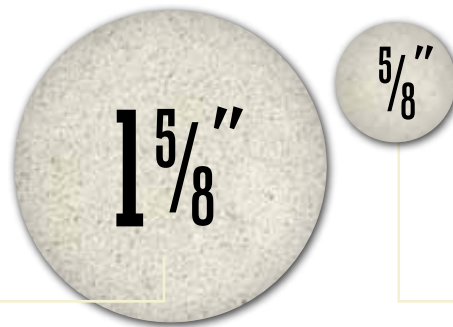
Don't replace it, raise it!®

Residential: Sidewalks, Porches, Patios, Garage floors, Basement floors, Driveways, Steps, and Swimming pool aprons.

Commercial & Industrial applications: Roadways, Undersealing, Warehouse floors, Airport Runways, and Bridge approaches.



TRADITIONAL MUJACKING
Holes are larger and require more to be installed.



POLYURETHANE LEVELING
Smaller and fewer holes required.



Celebrating 30 years of Healing Homes.

Helitech Waterproofing & Foundation Repair | helitechonline.com | 800-246-9721

Bloomington-Normal 309-820-1500 • Central IL 217-522-5595 • Central MO 573-441-2254
Evansville IN 812-297-5239 • Metro East 618-235-5595 • Moline 309-799-1260 • Peoria 309-676-5595
Quad Cities IA 563-275-5300 • Southeast MO 573-335-4060 • Southern IL 618-993-5032
St. Louis 314-965-4565 • Western Kentucky 270-442-4060